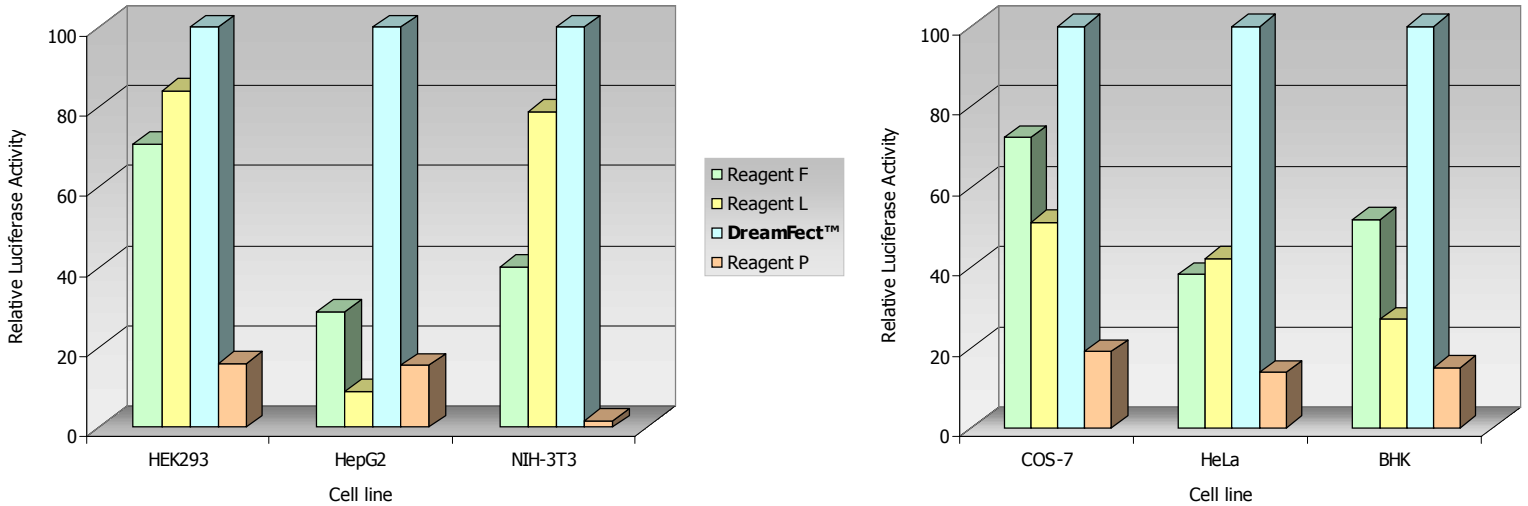


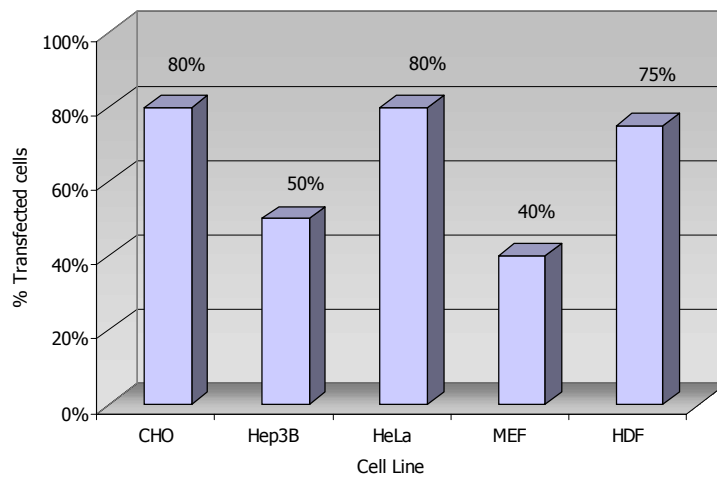
## DreamFect™ complementary results

### DreamFect™ efficiency compared to other transfection reagents



Cells were transfected with 0.1 µg/well of pND2Luc plasmid DNA in 96-well plates. **DreamFect™** transfections were performed as described in the instruction manual with 0.4 µl/well of DreamFect™ reagent. The other transfection reagents were assayed according to the manufacturer's instruction. Luciferase activities were measured with a Luciferase assay kit and results are expressed as relative values.

### Percentage of transfected cells achieved with DreamFect™ on several cell lines

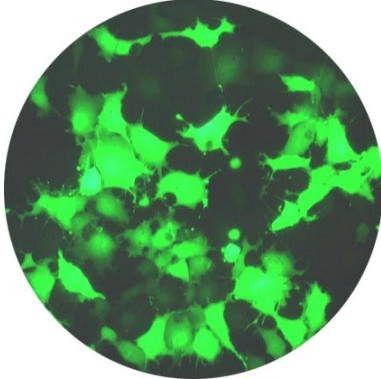


For an updated list of cells successfully transfected, please visit our website: [www.ozbiosciences.com](http://www.ozbiosciences.com).

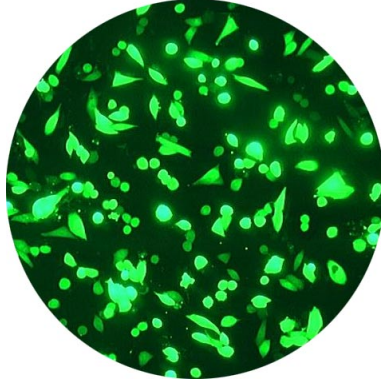
Green Fluorescent Protein expression in different cell lines transfected with **DreamFect™**

Cells ( $2 \times 10^5$ ) were transfected with 1  $\mu\text{g}$ /well of pEGFP plasmid and 4  $\mu\text{l}$  of **DreamFect™** reagent in 12-well plates. E-GFP expression was monitored 48 h after transfection by fluorescence microscopy.

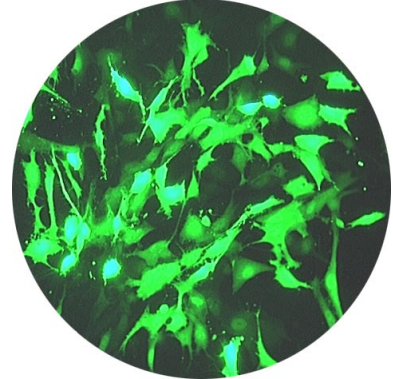
**COS 7**



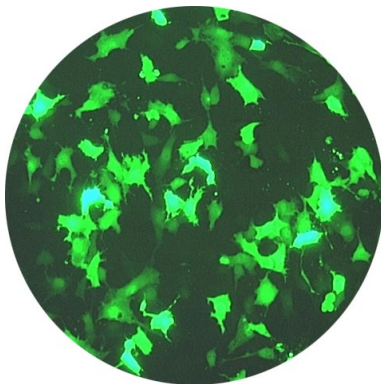
**CHO-K1**



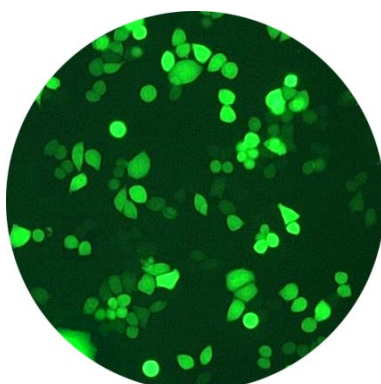
**CV-1**



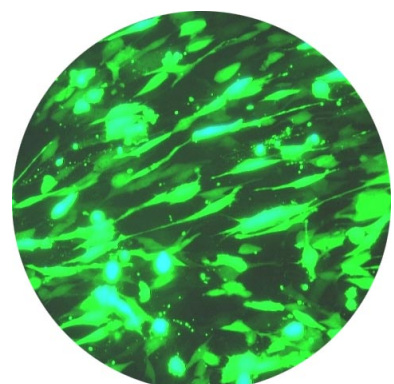
**NIH-3T3**



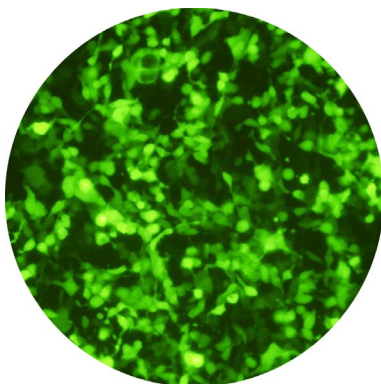
**HeLa**



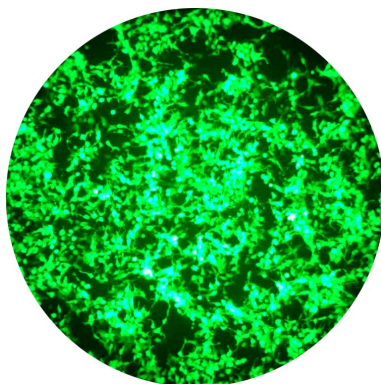
**BHK-21**



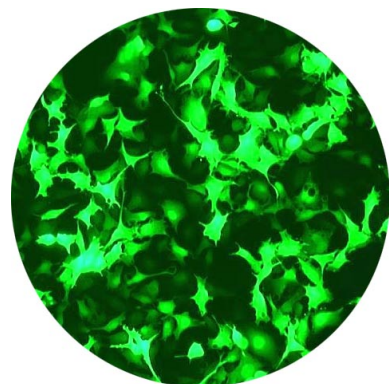
**HT-1080**



**293**

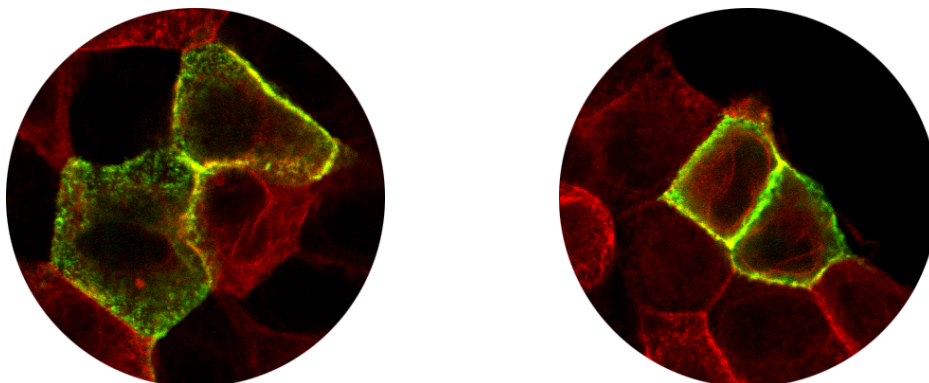


**B16-F10**



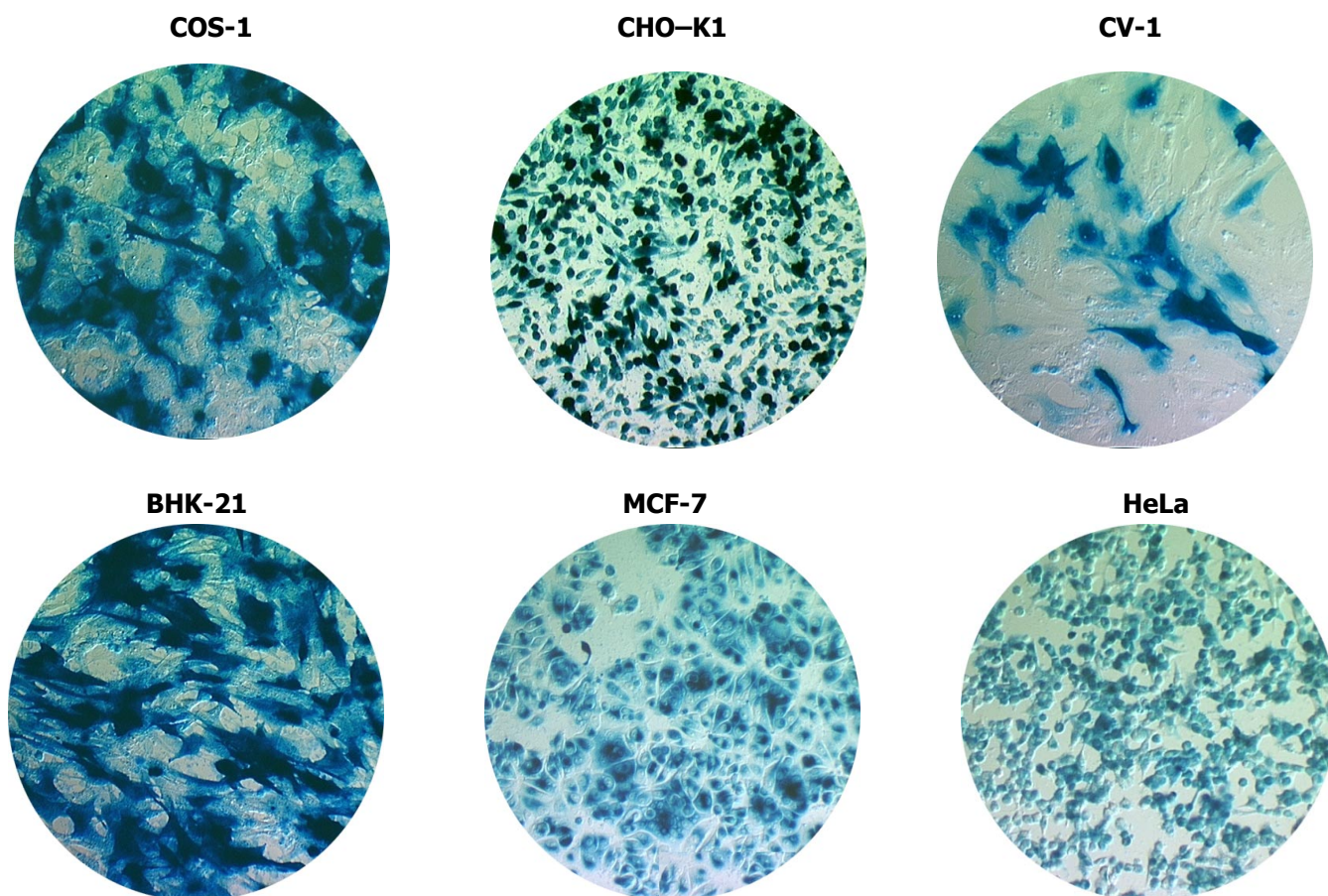
For percentage of transfected cells, please visit our website: [www.ozbiosciences.com](http://www.ozbiosciences.com).

Madin Darby Canine Kidney (MDCK) cells ( $4 \times 10^5$ ) were transfected with 1  $\mu\text{g}$  of plasmid DNA, encoding for a chimeric E-GFP protein targeted to the cell membrane (PH Domain), and 4  $\mu\text{l}$  of **DreamFect™** reagent on coverslips in a 6-well plate. 24 hours post-transfection, cells were fixed with 4% PFA and actin was stained with Texas Red-labeled phalloidin. E-GFP expression and localization was monitored by confocal microscopy.



$\beta$ -Galactosidase expression in different cell lines transfected with **DreamFect™**

Cells ( $4 \times 10^5$ ) were transfected with 2  $\mu\text{g}$ /well of pLacZ plasmid and 8  $\mu\text{l}$  of **DreamFect™** reagent in 6-well plates.  $\beta$ -Galactosidase expression was revealed 48 h after transfection using OZ Biosciences' X-Gal staining kit (catalog number GX-10003).



For percentage of transfected cells, please visit our website: [www.ozbiosciences.com](http://www.ozbiosciences.com).